

2024-25



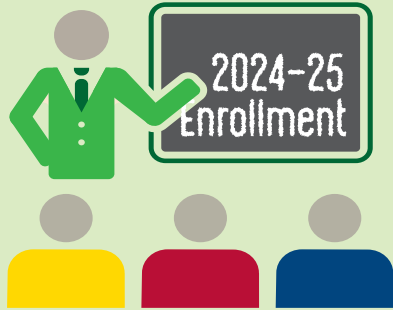
ANNUAL STUDENT AND FINANCIAL AID PROFILE

Division of Enrollment Services



ENROLLMENT FACTS | 2024-25

Credit Students



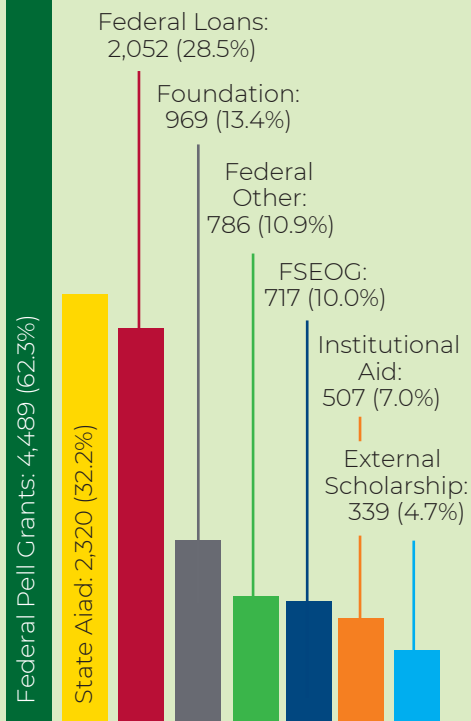
Credit Headcount

21,577

FINANCIAL AID

7,205 WCC students received some form of financial aid.

Breakdown of aid received:



DUAL ENROLLMENT

1,199

New Students

79

Schools Participating

3,828
AWARDS GRANTED
2024-25



1,474

Associate Degrees

2,354

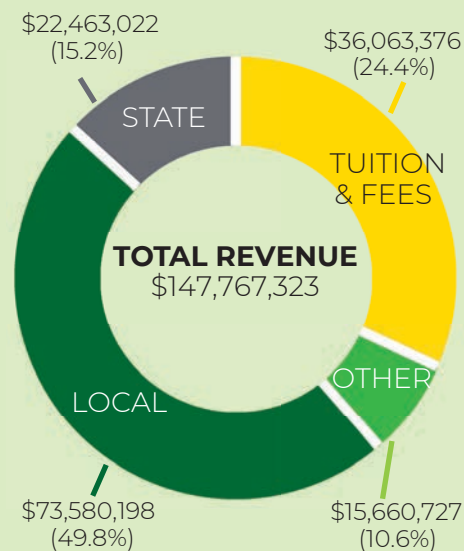
Certificates

OTHER DEMOGRAPHICS



5,218 (24.2%)	First generation college
290 (1.3%)	Students w/ disabilities
509 (2.4%)	Veterans
742 (3.4%)	International students

REVENUE BY SOURCE



AVERAGE ANNUAL TUITION & FEES



\$2,970



Michigan four-year colleges & universities

\$28,033

FALL 2025 STUDENT DEMOGRAPHICS

11,641 students

REGISTRATION STATUS

8,411

(72.3%)

3,230

(27.5%)

Part-time students

Full-time students

REGISTRATION TYPE

3,572

(30.7%)

7,167

(61.6%)

902

(7.7%)

New students

Continuing students

Readmit students

GENDER*



Female: 6,110 (53.6%)

Unknown: 245



Male: 5,286 (46.4%)

ETHNICITY*

African American 1,801 (16.3%)

Asian 855 (7.7%)

Hispanic 1,044 (9.4%)

Native American 36 (0.3%)

Other Pacific Islander 7 (0.1%)

White 6,592 (59.5%)

Unknown 564 (4.8%)

Two or More 742 (6.7%)

* Percentages based on known data.

MORE FALL '25 DEMOGRAPHICS ON BACK



PROGRAM / COURSE OFFERINGS | 2024-25



58	Associate Degrees Offered
76	Certificates Offered
20	Articulation Agreements, 2+2
60	Articulation Agreements, 3+1

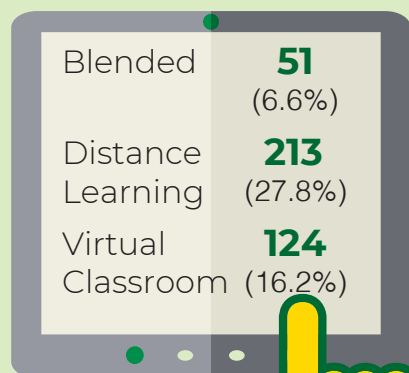
134

PROGRAMS OFFERED

50 (37.3%) programs are available via distance learning

767

COURSES OFFERED



Washtenaw Community College does not discriminate on the basis of religion, race, color, national origin, age, sex, height, weight, marital status, disability, veteran status, sexual orientation, gender identity, gender expression, or any other protected status in its programs and activities. The following office has been designated to handle inquiries regarding non-discrimination policies, Title IX or ADA/504 inquiries: Executive Vice President of Student & Academic Services, SC 247, 734-973-3536.

Washtenaw Community College is accredited by the Higher Learning Commission 230 South LaSalle Street, Suite 7-500, Chicago, Illinois 60604-1411, 800-621-7440, <http://www.hlcommission.org>.

For information about Washtenaw Community College, call 734-973-3300 or visit wccnet.edu.

73,908



TOTAL COURSE ENROLLMENTS

32,239 Traditional

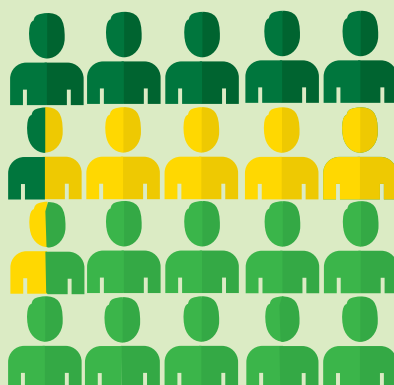
2,795 Blended

5,476 Virtual Classroom

33,398 Distance Learning

WCC created the Virtual Classroom as a synchronous option to online learning in response to the COVID-19 pandemic. Virtual classes are scheduled at set times and allow for interaction with instructors and classmates.

STUDENT HEADCOUNT



6,356 Traditional Only*

5,738 Distance Learning & Traditional

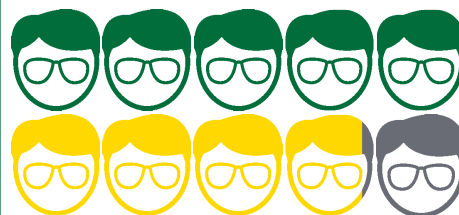
9,483 Distance Learning Only

* Includes Blended and In-Person

FALL 2025 STUDENT DEMOGRAPHICS

11,641 students

AGE*



21 & under 5,909 (50.8%)

22-39 4,571 (39.3%)

40 & over 1,161 (10.0%)

25.2 Average Age

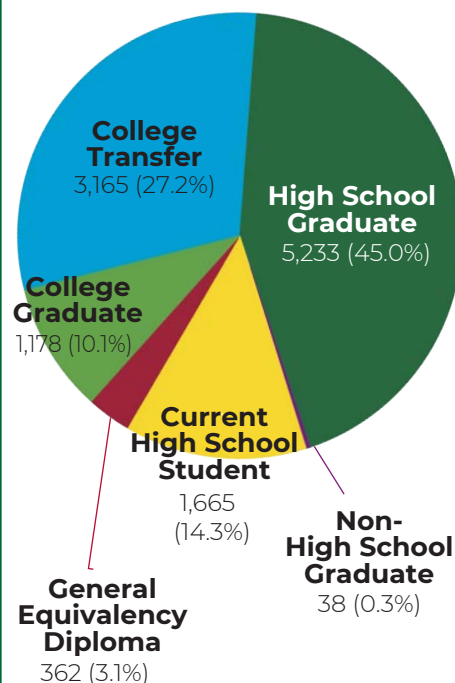
71.1%

8,278 students are categorized as Degree Seeking

6,543 students intend to Transfer

56.2%

STUDENT TYPE





Washtenaw Community College

FINANCIAL AID | 2024-25

7,205 students received ...
\$41,883,593
... in some type of financial aid for the academic year.

Federal Pell Grants: \$18,678,383 to 4,489 students

% OF STUDENTS RECEIVING FINANCIAL AID BY SEMESTER



FALL 2024
47.1%



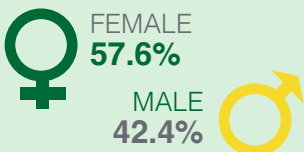
WINTER 2025
46.1%



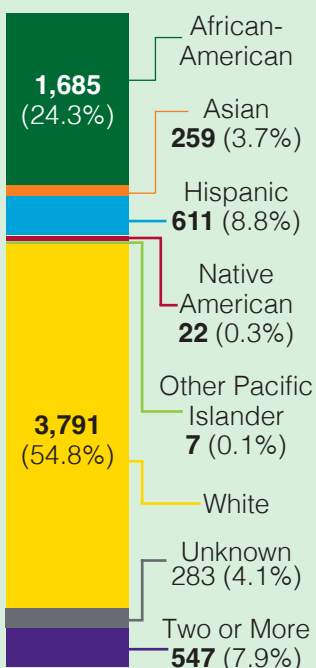
SUMMER 2025
31.5%

WCC Foundation Scholarships: \$1,320,434 to 969 students

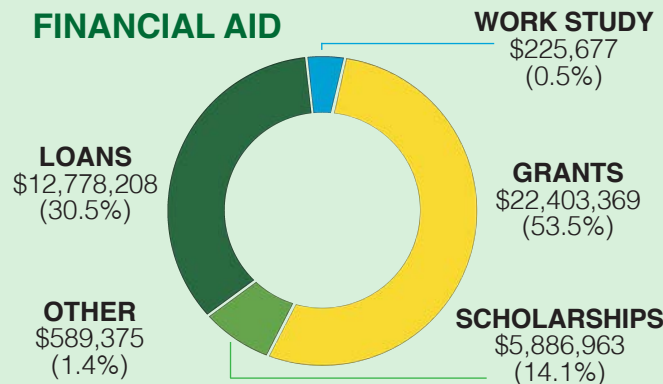
GENDER*



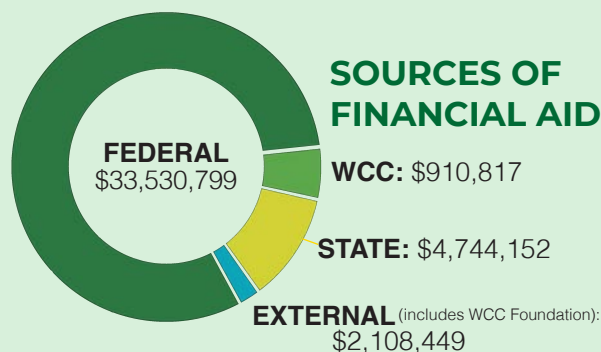
ETHNICITY*



TYPES OF FINANCIAL AID



Scholarships to high school grads:
\$499,993 to 135 students



Washtenaw Community College does not discriminate on the basis of religion, race, color, national origin, age, sex, height, weight, marital status, disability, veteran status, sexual orientation, gender identity, gender expression, or any other protected status in its programs and activities. The following office has been designated to handle inquiries regarding non-discrimination policies, Title IX or ADA/504 inquiries: Executive Vice President of Student & Academic Services, SC 247, 734-973-3536.

Washtenaw Community College is accredited by the Higher Learning Commission 230 South LaSalle Street, Suite 7-500, Chicago, Illinois 60604-1411, 800-621-7440, <http://www.hlcommission.org>.

* Percentages based on known data.

FALL 2025 FINANCIAL AID STUDENT DEMOGRAPHICS

REGISTRATION STATUS

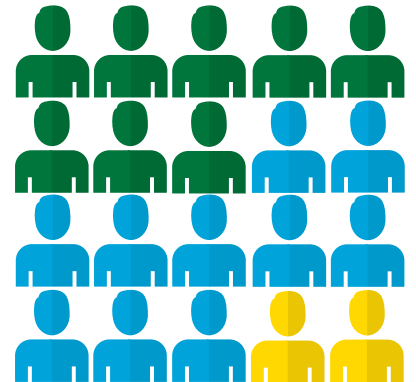
42.0%

2,166 students
receiving financial
aid were
Full-Time
(12 or more credits)

2,988
students were
Part-Time

58.0%

AGE OF STUDENTS



26.5 Avg.
Age

STUDENT TYPE

