

A photograph of a small, vibrant green plant with several yellow flowers growing out of a crack in a dark asphalt surface. The plant is positioned on the left side of the frame, and the crack runs vertically through the center. The background is a textured, dark grey asphalt.

Resilience

WINTER 2022
IN-SERVICE SCHEDULE



To Our Colleagues,

The Teaching and Learning Center is proud to welcome you to Washtenaw Community College's Winter 2022 In-Service. We are excited to once again host a week of quality sessions, speakers, and experiences. We are sure you'll enjoy it.

Each session that you have the opportunity to attend will be hosted online, via Zoom. You will have the chance to interact, brainstorm, and ask questions with the presenter; as well as with your colleagues across campus. Most sessions will be recorded and hosted online following the conclusion of In-Service, so you will be able to go back to any session and watch it in its entirety. These recordings will be available online through June 2022.

This year's theme is *Resilience*. In the months since Fall In-Service, we as a community have been able to put resilience to the test. We have found creative and student-focused ways to balance remote and in-person classes, implemented effective procedures to keep our students and colleagues safe and healthy, while continuing to focus on the success of our students. WCC has exemplified the power of true resilience as we continue to grow, adapt, and rise to new challenges together.

We hope that this Winter's In-Service challenges you, inspires you, and equips you with the confidence and the knowledge to move forward into a new semester full steam ahead. We hope that you're able to meet new people from all around campus, and that you're able to make connections that last longer than these four days. And above all, we hope you continue to join us as we cultivate our sense of resilience and use it to collaborate and strengthen our community, and to build a sustainable future for OUR students and the college.

All our Best,

The Teaching and Learning Center



Tips for a Great Zoom Session



MUTE YOURSELF

If you aren't speaking, please mute yourself! Even quiet background noises can be distracting to the rest of the session participants. If you un-mute yourself to speak, avoid typing and promptly mute yourself again when finished.



USE THE CHAT BOX

The chat box is a feature made to communicate with others during a presentation. It's a great way to ask questions or make comments without talking over anyone. If you do not know where to find the chat box, be sure to ask the host at the beginning of the session.



ARRIVE ON TIME, STAY THE WHOLE SESSION

It is always best practice to arrive on time to a session. However, if you join late, enter quietly and unobtrusively. Please stay the whole session for full PD credit!

AUDIO OR VIDEO FREEZING?

You might have a poor internet connection. Try turning your video off for a while, or utilize an ethernet connection. This is especially true for sessions with a large number of attendees.



STOP VIDEO IF:

- There are visual distractions in your background;
- You're moving your device;
- You need to absent yourself for a moment.



BE PATIENT!

This is different for all of us; be extra patient with technology, yourself, and others. Hosting? Assume at least one person in your session is brand new to this - a little kindness will go a long way!



Faculty Help Pathways

CALL HELPDESK IF...



- Your computer isn't turning on
- You're having trouble with your keyboard, mouse, or other items related to your computer

(734) 973-3456

help-desk@wccnet.edu

EMAIL FACULTY HELP IF...



- Blackboard isn't showing all of your content
- You have Grade Center or other Blackboard program questions

(734) 477-8713

faculty.help@wccnet.edu

EMAIL MEDIA SERVICES IF...



- You are having *technical* issues with Zoom, such as audio/visual not connecting or problems with your account

(734) 677-5180

mediahelp@wccnet.edu

EMAIL THE TLC IF...



- You are having issues with a TLC session - like a broken link or no access code
- You are having trouble with KALPA in any way

(734) 677-5009

tlc.staff@wccnet.edu



Blackboard

FACULTY HELP DESK

Monday - Thursday: 9AM - 7PM • Friday: 9AM - 5PM
Saturday / Sunday: 12PM - 6PM

734.477.8713

faculty.help@wccnet.edu

Blackboard, instructional media, and related issues

FACULTY.HELP@WCCNET.EDU

By Appointment Individual Training

Individual one hour sessions are available for **KALPA credit** to help you set up and manage your Blackboard course site.



Set up your virtual session online

WEBINARS@KALPA

Webinars: Look for these sessions and/or recordings

CITL • Blackboard Open Office Hours

- Blackboard: Getting the Main Things Ready for Fall Semester
- Overview and Organization in Your Blackboard Course Sites
- Interaction and Assignments in Blackboard
- Blackboard: Provide Feedback to Students Using the BB Annotate Tool
- Blackboard: What the Student Scores on Your Tests are Telling You
- Retention Center & Reports in Blackboard: Student Performance
- Setting Up and Managing the Blackboard Grade Center
- Grade Center Check-Up! Blackboard
- Blackboard: Creating Rubrics and Looking at Types/Examples
- Blackboard: Rubrics: Make Your Grading Easier
- Blackboard: Goals Tool - Mapping, Aligning, and Assessing
- Groups Tools: Collaborative Learning in Blackboard

more...



WEBINARS

Sponsored by: TLC
Teaching and Learning Center

SELF SERVICE@WCC

Self-Serve Tutorials

Faculty Resources tab in Blackboard
Help & How To (subtab)



FACULTY RESOURCES
Help & How To



HELPING STUDENTS SUCCEED AT WCC

Mental Health

Tele-Mental Health Services

734-677-5102

Campus Assistance Program (CAP)

1-866-227-3834

Safety

Public Safety

734-973-3411

Sexual Assault Reporting

734-973-3536 or the **Report
a Concern** Form

Finances

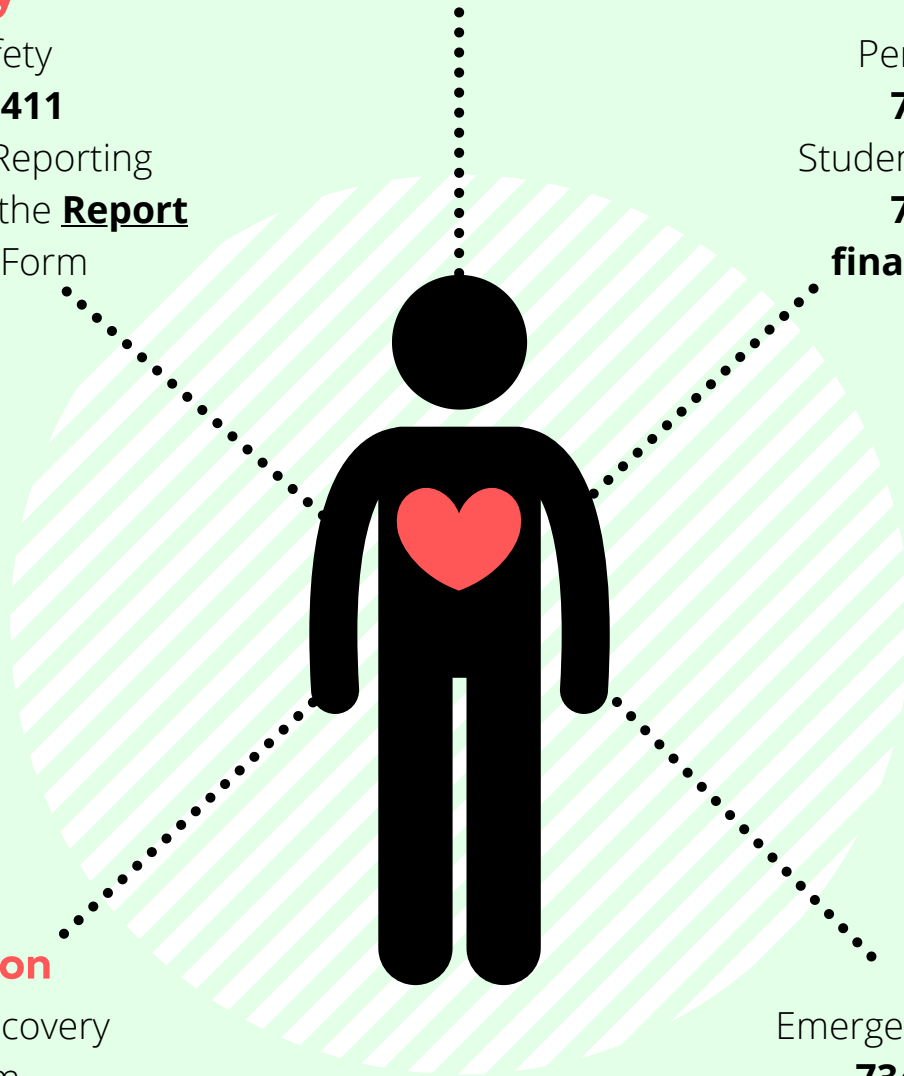
Personal Finances

734-677-5105

Student Emergency Fund

734-973-3523

finaid@wccnet.edu



Addiction

Collegiate Recovery
Program

therzog@wccnet.edu

Food

Emergency Food Pantry

734-677-5105

src@wccnet.edu

beyond the classroom

Winter 2022 In-Service

Tuesday, January 4, 2022

TIME	TOPIC / PRESENTER(S)
------	----------------------

9:00am-10:00am	All Faculty & Staff Winter 2022 Kick-Off (President Rose Bellanca) Welcome back! Watch your WCC email for an Email from the President
----------------	--

BREAK — 10:00am-10:30am

10:30am-11:30am Teaching	FPD Lightning Talks: Inclusive Teaching (Molly Ledermann, Prof Librarian) In this faculty-led session, five of our faculty colleagues will share their best strategies and ideas for inclusive teaching practices. https://wccnet-edu.zoom.us/j/83673123777?pwd=ZDFDbXhRb1JucTYyOTRBQkVNVUtdz09 Meeting ID: 836 7312 3777 Passcode: 832440 Contact tlc.staff@wccnet.edu if you have any issues logging in.
------------------------------------	--

10:30am-11:30am Teaching	When Life Gets in The Way: Connecting Students to Supportive Resources & Services (Grace Fama, Success Coach Manager; Tracci Johnson, Dean of Students) Nearly 2/3 of college students stop-out before completing a degree for reasons other than academics. Mental health, financial strain, work schedules, family commitments - these are just some of the circumstances that can become a barrier to our students' success. WCC has many resources to assist students, and with timely intervention and encouragement we can help students stay enrolled and complete their degree. During this session, Tracci and Grace will share: <ul style="list-style-type: none">• Data and research about student attrition• Services and resources available including counseling, emergency grants, basic needs assistance, success coaching• How faculty and staff can connect students to those resources https://wccnet-edu.zoom.us/j/82029084756?pwd=dkNSa21VOW8zdU9Ez2pZVjldG13UT09 Meeting ID: 820 2908 4756 Passcode: 038781 Contact tlc.staff@wccnet.edu if you have any issues logging in.
------------------------------------	---

10:30am-11:30am Teaching	What IS Competency-Based Education (Kimberly Jones, Prof Faculty-English) Join Kim, LA-Innovate Committee Member, in exploring the "mystery" behind Competency-Based Education. This new initiative at WCC focuses on increasing part-time student persistence and success by providing students with autonomy; authentic, formative assessments; and differentiated instruction. https://wccnet-edu.zoom.us/j/86514003294?pwd=djdUa01TMDVkdMDlwd0didHILbkNmUT09 Meeting ID: 865 1400 3294 Passcode: 943448 Contact tlc.staff@wccnet.edu if you have any issues logging in.
------------------------------------	---

BREAK — 11:30am-12:30pm



Washtenaw Community College does not discriminate on the basis of religion, race, color, national origin, age, sex, height, weight, marital status, disability, veteran status, sexual orientation, gender identity, gender expression, or any other protected status in its programs and activities. The following office has been designated to handle inquiries regarding non-discrimination policies: Title IX or ADA/504 Inquiries: Vice President of Student & Academic Services, 50-247, 734-573-3030.

HUMAN LIBRARY
REAL PEOPLE. REAL CONVERSATIONS.
UNJUDGE SOMEONE.

Wednesday, March 23, 2022
11 AM-2 PM
Zoom
bit.ly/WCC-HumanLibrary

 **Washtenaw** Community College | RICHARD W. BAILEY LIBRARY & LEARNING COMMONS

TIME	TOPIC / PRESENTER(S)
12:30pm-1:30pm Teaching	<p>Resume Worthy Assignments: Students Get Hired, Earn Scholarships & Step Toward Equitability (Claire Sparklin, Prof Faculty-Communication; Michelle Westerdale, OL Experience Architect; Kyrsten Rue, Employee Relations Manager)</p> <p><i>"I tried for two years to get a job outside of child care, but no one would hire me. I added my project management work in your class to my resume. Very first interview, I got the job."</i> - Student</p> <p>Our students are struggling to get career-specific, real-world experience. They often don't have time to look for, apply for and work an internship in addition to school, job and family obligations. And without that valuable experience, they can lose out on job opportunities, higher pay and entrance into selective universities.</p> <p>Resume-worthy assignments can help! A class project or activity that creates real-world experience for our students and directly translates to hireable skills is what our students need, but how can we create these opportunities and still meet our master syllabus and not work 80 hours a week? Let's explore different options from large to small resume-worthy assignments, from project management to organizational communication for on-campus, virtual and online delivery.</p> <p>Join Claire, Michelle, Kyrsten, and other faculty and staff interested in creating resume-worthy assignments for our students.</p> <p>https://wccnet-edu.zoom.us/j/2964611483?pwd=bEJBUk9nYnFnOU5MNThDYkxQUDZuQT09 Meeting ID: 296 461 1483 Passcode: WCC Contact tlc.staff@wccnet.edu if you have any issues logging in.</p>
12:30pm-1:30pm Teaching	<p>Examity – WCC's Virtual Proctoring for Online Classes (Gloria Eccleston, Director-Online Learning & Svs)</p> <p>Examity is WCC's Virtual Proctoring Solution for online testing of high stakes assessments. This session will cover the basics of using Examity from A to Z, including pairing your Blackboard course site, accessing the Examity Dashboard, selecting the appropriate proctoring level, setting up the exam's parameters and rules, checking the settings, effectively communicating the information to your students, and monitoring the results. The Online Proctoring Policies and Best Practices are essential and ALL faculty who are using Examity this Winter should attend this session.</p> <p>https://wccnet-edu.zoom.us/j/8827335572?pwd=VKE5ZEFHZ3FSdUxTdThMN1RUcFZTQT09 Meeting ID: 882 733 5572 Passcode: 246401 Contact tlc.staff@wccnet.edu if you have any issues logging in.</p>
12:30pm-1:30pm Teaching	<p>HyFlex Classrooms at WCC (Peter Baccile, Exc Dir OL, Edu & Media Tech Sv; Randy VanWagnen, Prof Faculty-Digital Media Arts)</p> <p>The "HyFlex" classroom is a newer term that has been going viral since the beginning of the pandemic. What is it and how does it work? In simple terms, it is a classroom set-up to handle Zoom and in-person students at the same time. In this session, which you can participate via Zoom or in-person, faculty can experience the setting from the student perspective and get familiar with this modality of learning! You can attend in GM 015, or via the Zoom link attached. In-person faculty will have a chance to participate with the technology.</p> <p>https://wccnet-edu.zoom.us/j/89900417978?pwd=TWxFTFY1OVM4OHhSYWJ1VUV3Uk1LZz09 Meeting ID: 899 0041 7978 Passcode: 168914 Contact tlc.staff@wccnet.edu if you have any issues logging in.</p>
BREAK — 1:30pm-2:00pm	
2:00pm-3:00pm Teaching	<p>What Works: Policies for Make-ups, Extensions, Drop-the-Lowest (Anne Heise, Prof Faculty-Life Science; Larry David, Prof Faculty-Math)</p> <p>If there were one best policy for allowing late work, make-up exams and other changes to our class deadlines surely we would all know it by now. However, there is a lively debate about the best policies for class deadlines. Larry David (math) and Anne Heise (biology) will share their approaches and lead a discussion of the pros and cons of other possible policies.</p> <p>https://wccnet-edu.zoom.us/j/6969083211 Meeting ID: 696 908 3211 Contact tlc.staff@wccnet.edu if you have any issues logging in.</p>

TIME	TOPIC / PRESENTER(S)
2:00pm-3:00pm Teaching	Quickly Multi-Course Productivity Tool with Blackboard (Nancy Collison, Innovation Tech Manager) Use the Quickly Course Tools to manage communication and content across multiple course sections for efficiency and simplifying of repetitive tasks. Learn to analyze your current processes for overlap and consider the tools available to help streamline these tasks. We will look at the Quickly dashboard and which types of material align with the different menu options. Samples, tips, and the student perspective will be included. https://wccnet-edu.zoom.us/j/84047799945?pwd=ak9EUllaSExBZWFlZVluTHJSWFJRdz09 Meeting ID: 840 4779 9945 Passcode: 521921 Contact tlc.staff@wccnet.edu if you have any issues logging in.
2:00pm-3:00pm Teaching	The Liberal Arts in the Workplace: Industry Panel for Faculty (Hava Levitt-Phillips, Prof Faculty-English/Writing; Dena Blair, Prof Faculty-Communication) Join Hava and Dena of the LA-Innovate Committee for this moderated panel discussion about how important the Liberal Arts Workplace Skills are to professionals across industry. Panelists will join us from a diversity of fields and organizations to share why they value these essential skills. https://wccnet-edu.zoom.us/j/89207341795?pwd=eUprS3JpcWtUQzJCcFJ3MStCcUI5dz09 Meeting ID: 892 0734 1795 Passcode: 003368 Contact tlc.staff@wccnet.edu if you have any issues logging in.
BREAK — 3:00pm-3:30pm	
3:30pm-4:30pm Teaching	Writing Workshop: The Open Door (Tom Zimmerman, Prof Faculty-English/Comp & Writing Center Dir; Hava Levitt-Phillips, Prof Faculty-English/Writing & FPD Chair) Join Tom and Hava (FPD) for this fun, low-stress writing workshop! Learn about how you can contribute to The Open Door: A Blog+Anthology of Teaching Reflections. We'll develop writing on all things teaching & learning. Maybe you'll create something new or polish up an old idea! Maybe you'll even let us show you off on the blog & in the anthology! Come have some fun with us and find out. https://wccnet-edu.zoom.us/j/82576455829?pwd=cFpaY1JLZ2hHc0hhMGRQYIRCbIVFUT09 Meeting ID: 825 7645 5829 Passcode: 098106 Contact tlc.staff@wccnet.edu if you have any issues logging in.
3:30pm-4:30pm Teaching	Micro-Learning: Lessons Learned (Genevieve White, Manager of Learning Design-CiTL) Are you looking for a little strategy with the potential for big impact in increasing student success? Perhaps a strategy to mitigate student emails with questions about sticky topics in your class? Do students routinely enter into your course missing some essential prerequisite knowledge? Micro-learning lessons provide one way to deepen student learning, especially when students get stuck on a single topic. While micro-learning provides micro-lessons to reinforce student learning, it does require thoughtful planning on the instructor's part. In this session, Genevieve, will share a document to help faculty in planning and utilizing the concept of micro-learning. CITL will also invite faculty who have already embarked on the micro-learning journey to share their experiences in planning and utilizing micro-learning in their courses. Time permitting, we will also share an example of micro-learning in a software tool we are exploring, extend to you the option of visiting a short on-demand course with additional information on micro-learning, and share an opportunity for you to sign up for a professional learning community to try out micro-learning (and a micro-learning software option) with your colleagues. https://wccnet-edu.zoom.us/j/9919691613 Meeting ID: 991 969 1613 Contact tlc.staff@wccnet.edu if you have any issues logging in.

Welcome Colette Douglas!



WINTER IN-SERVICE 2022

Join us for In-Service
exclusive sessions with
Colette Douglas, President of
Elite Customer Service, LLC.

Colette Douglas, the creator of Elite Customer Service, LLC has worked with individuals and companies in the area of customer service and loyalty for more than 30 years. Colette is a gifted speaker, consultant, and coach. The strategies and concepts she perfected are integrated into the Elite Customer Service training, coaching, seminars, and webinars.

Colette understands the issues that organizations face in connecting with those she wants to serve. In her strength, kindness and efficiency, she delivers just what is needed to clarify the right next steps in training organizations in providing exceptional satisfaction to their customers.

05 JANUARY 2021

10:30
-
11:30 am

The Multigenerational Workplace

This course is intended to help participants identify problems & to learn new approaches in order to bridge generational gaps.

12:30
-
01:30 pm

Exploring Diversity at Work

This course seeks to engage participants in practical guidance & strategies to explore the differences & the dynamics of privilege, oppression, and diversity in the work environment.

Winter 2022 In-Service

Wednesday, January 5, 2022

TIME	TOPIC / PRESENTER(S)
9:00am-10:00am Workplace Effect.	WCC CARE Team - Let Us Help You, Help Students (Tracci Johnson) Do you have a student who is missing class or assignments because they are stressed out? Has the behavior of your student changed? Let's talk about how the CARE team can assist you. https://wccnet-edu.zoom.us/j/83467948825 Meeting ID: 834 6794 8825 Contact tlc.staff@wccnet.edu if you have any issues logging in.
9:00am-10:00am Teaching	OER Beyond A Textbook (Molly Ledermann, Prof Librarian; Michelle Westerdale, OL Experience Architect) Join Molly and Michelle for a lively conversation about Open Educational Resources and how OER create a more equitable and inclusive learning experience for students. Learn how OER extend beyond textbooks. Bring your OER, copyright, Creative Commons, OER instructional design, and OER Cohort questions and get some answers! https://wccnet-edu.zoom.us/j/84069934406?pwd=NGRHYNFYQmxIS1BINic1d1NTZW5kZz09 Meeting ID: 840 6993 4406 Passcode: 705310 Contact tlc.staff@wccnet.edu if you have any issues logging in.
9:00am-10:00am Teaching	VC Courses Faculty Forum (Genevieve White, Manager of Learning Design-CITL) CITL presents an open forum for faculty to share their experiences with VC courses over the last six semesters, with the conversation geared to answering one central question: "What have you done in your VC course(s) that made it engaging for students?" Additional ideas to guide discussion: <ul style="list-style-type: none">• What would make the course experience simpler for students when moving from one instructor's course to another?• What can an instructor do to reduce technology barriers for students in VC courses? This is an active and participatory session; please bring all of your success stories to share! We invite you to tell your stories and share your screen to show something that has worked well in the VC environment. Plan to see some additional strategies from your colleagues to bring with you, as well! https://wccnet-edu.zoom.us/j/9919691613 Meeting ID: 991 969 1613 Contact tlc.staff@wccnet.edu if you have any issues logging in.
9:00am-10:30am Meeting	Curriculum & Assessment Committee Meeting (Joy Garrett, Director-Curriculum & Assessment) The Curriculum & Assessment Committee will hold their regular committee meeting. https://wccnet-edu.zoom.us/j/88121400774?pwd=UGhBK25jMm9kNlNnAT3lGV2g3aVhHQT09 Meeting ID: 881 2140 0774 Passcode: 160514 Contact tlc.staff@wccnet.edu if you have any issues logging in.
BREAK — 10:00am-10:30am	
10:30am-11:30am Teaching	Blackboard: Grade Center – Setup and Manage (Nancy Collison, Innovation Tech Manager) This session will help you to choose which options fit your content and objectives in the Blackboard Grade Center. You will be able to manage the tools, columns and row setup, and create calculated categories. Topics include: <ul style="list-style-type: none">• Setting your External Grade designation for transfer• Setting up Smart Views to segment the material• Viewing attempts or log data• Generating reports• Understanding the student version (My Grades) (Break for this session is 11:30am-12:30pm) https://wccnet-edu.zoom.us/j/83152077901?pwd=OU9kLzEvdXJ1OVUvcCtKRHJnK0tFQT09 Meeting ID: 831 5207 7901 Passcode: 975032 Contact tlc.staff@wccnet.edu if you have any issues logging in.

Wednesday, January 5, 2022

TIME	TOPIC / PRESENTER(S)
10:30am-11:30am Workplace Effect. OPT – Divers/Inclus	The Multigenerational Workplace (Colette Douglas, President of Elite Customer Service) Organizational leaders and managers are consistently challenged with directing generational diversity in the workplace due to differing (sometimes combative) mindsets, work styles, and communications styles. This course is intended to promote understanding of the different generations present in the workforce today. It will provide strategies and recommendations for recruiting retaining, and coaching across generations and as such, help in developing a personal work plan to address specific job-related multigenerational workforce This course is intended to help participants identify problems and to learn new approaches in order to bridge generational gaps. It aims to create a workforce that uses new tools and techniques for the purpose of building a congenial and productive work atmosphere. (Break for this session is 11:30am-12:30pm) https://tinyurl.com/2h4fk28a Meeting ID: 897 8471 1135 Passcode: 738325 Contact tlc.staff@wccnet.edu if you have any issues logging in.
10:30am-12:00pm Teaching	OK Zoomer – Going Beyond the Basics (Doug Shaw) Have you noticed that while there are lots of avenues to learn Zoom 101 (muting the microphone, changing your name, going into Gallery view) there are not a lot of resources that go beyond that? This workshop builds on techniques developed by the Applied Improvisation Network to do things with Zoom that you probably have never seen before! Things that will make your zoom meetings more effective and engaging, and are not yet widely known. We will be using features of zoom in ways that they were not originally intended to be used, have a good time, and you will leave with new ideas you can use right away, and a new mindset that will make you feel charged and happy to continue making discoveries. PRE-REGISTRATION IS REQUIRED. (Break for this session is 12:00pm-1:30pm) https://us02web.zoom.us/join/zoom/register/tZwpcO6trDgqHNeeAEC8N9tnFtF4e2qi5f2g Contact tlc.staff@wccnet.edu if you have any issues logging in.
BREAK — Check Emails / Lunch 11:30am-12:30pm or 12:00pm-1:30pm depending which sessions you attend	
12:30pm-1:30pm Workplace Effect. OPT-Divers/Inclus	Advancing Equity via Relevance & Rigor (Isis Artze-Vega, Ed.D. College Provost & VP-Academic Affairs, Valencia College) In this interactive workshop, Dr. Artze-Vega will provide a brief overview of the research on relevance and rigor in relation to equity-minded teaching. She will then guide participants in an analysis of their course outcomes and learning objectives, suggesting specific ways they can make their teaching more relevant and rigorous. Isis Artze-Vega, Ed.D. serves as College Provost and Vice President for Academic Affairs at Valencia College in Central Florida, long regarded one of the nation's best community colleges, a Hispanic-Serving Institution that serves about 70,000 students annually. She provides strategic leadership for the areas of curriculum, assessment, faculty development, distance learning, career and workforce education, and partnerships for educational equity. Prior to joining Valencia, Isis served as Assistant Vice President for Teaching and Learning at Florida International University, leading such efforts as a gateway course project, a hybrid course initiative, and the comprehensive redesign of teaching evaluation. Prior to joining FIU, Isis taught English Composition and Enrollment Management at the University of Miami. Most importantly, she is the proud wife of visual artist Sinuhe Vega; the proud mami of Kamilah, 13, and Delilah, 11; and forever indebted to extraordinary parents, Mayra and Elias. Her work is fueled by a commitment to equity and justice, implemented through love and service. https://wccnet-edu.zoom.us/j/85879375184?pwd=Uitkb09SR0Fvb3JPSk41LzY4cTNIUT09 Meeting ID: 858 7937 5184 Passcode: 623758 Contact tlc.staff@wccnet.edu if you have any issues logging in.


Wednesday, January 5, 2022

TIME	TOPIC / PRESENTER(S)
12:30pm-1:30pm Teaching	Program Review – Deconstructed (Eva Samulski, Dean of Business) Having a hard time figuring out what needs to be done for program review? Attend this one-hour session which will deconstruct and simplify the program review process. Step by steps instructions will be provided as well as some samples to give you the confidence to complete your program review with ease. https://wccnet-edu.zoom.us/j/82107533533?pwd=Wk9kakR5cTJSNkIHM2pnRG5INjZjUT09 Meeting ID: 821 0753 3533 Passcode: 495072 Contact tlc.staff@wccnet.edu if you have any issues logging in.
12:30pm-1:30pm Workplace Effect. OPT-Divers/Inclus	Exploring Diversity at Work (Colette Douglas, President of Elite Customer Service) This course seeks to engage participants in practical guidance and strategies to explore the differences and the dynamics of privilege, oppression, and diversity in the work environment. It considers issues of human diversity broadly defined to include race, ethnicity, culture, nationality, religion, sexual orientation, gender, and pronoun identity. The expected outcome is to build a companionable work environment while building high performing teams and financial success of the organization. https://tinyurl.com/4jhf8pf3 Meeting ID: 895 7266 0066 Passcode: 375990 Contact tlc.staff@wccnet.edu if you have any issues logging in.
BREAK — 1:30pm-2:00pm	
1:30pm-3:00pm Teaching	OK Zoomer 2 – Becoming an Engagement Expert (Doug Shaw) This workshop is intended for people who have done OK Zoomer 1 and are ready for some more! Participants should be able to update their zoom to the latest version, be comfortable hosting zoom sessions, and have put thought into making them more interactive. This session is going to assume that you are able to have video on. Finally, if you can connect with a desktop or laptop computer, it should go much more smoothly! PRE-REGISTRATION IS REQUIRED. https://us02web.zoom.us/meeting/register/tZMsduqhqzwtGdb3-UURvHpeOinOpdwCIFIN Contact tlc.staff@wccnet.edu if you have any issues logging in.
2:00pm-3:00pm Teaching	Program Review – Hands-on Workshop (Eva Samulski, Dean of Business) Now that you know about Program Review are you ready to tackle getting the work done? Join in on this hands-on workshop and work through your Program Review with one on one personal assistance. Ask questions, put your plan together and knock this out of the park! https://wccnet-edu.zoom.us/j/82107533533?pwd=Wk9kakR5cTJSNkIHM2pnRG5INjZjUT09 Contact tlc.staff@wccnet.edu if you have any issues logging in.
2:00pm-3:00pm Teaching	TargetX Foundations for Faculty Advisors (Grace Fama, Success Coach Manager) Welcome to TargetX at WCC! This training session is geared towards new TargetX users. In this session, participants will: <ul style="list-style-type: none">• Know what a CRM is and why WCC is using TargetX• Understand the Data Structure of TargetX• Know how to navigate to various parts of TargetX• Know how to search for a Student Record• Know what kinds of data is on the Student Record• Know where to add advising notes to document advising sessions with students. https://wccnet-edu.zoom.us/j/85846723666?pwd=YUUxYjd2RmZHRmFQb2kwQnFVN3NYUT09 Meeting ID:858 4672 3666 Passcode:136314 Contact tlc.staff@wccnet.edu if you have any issues logging in.


BREAK — 3:00pm-3:15pm

Wednesday, January 5, 2022

TIME	TOPIC / PRESENTER(S)
3:15pm-5:00pm Meeting FT Faculty Required	<p>DIVISION MEETINGS – Click on the Division Title to access Division Zoom Meeting</p> <ul style="list-style-type: none">• Advanced Technology & Public Service (Dean Baber) Meeting ID: 860 5569 3154 Passcode: 805439• Arts & Humanities (Dean Britten)• Business & Computer Technologies (Dean Samulski)• Health & Applied Technologies (Dean Lambert)• Math & Sciences (Dean Vega) Meeting ID: 814 9839 2353 Passcode: 911918 <p>Contact tlc.staff@wccnet.edu if you have any issues logging in.</p>


STEM SCHOLARS PROGRAM

Hope Scholarship funds scholarships through the fund for STEM Scholars. If you are interested in contributing please complete the [Payroll Deduction form](#) to make a one-time or reoccurring donation.



Save the Date! STEAM Week + Campus Explore 2022
March 1-3, 2022

ACADEMIC SUPPORT

tutoring success
coaching advising
study help library
writing support
goal setting tech
help disability
services research
assistance program
requirements
blackboard help

Do your students need help?

[Success Team Referral Form](#)

Brought to you by Advising & Counseling, The Bailey Library, The Learning Commons, Learning Support Services, The Student Success Team, and The Writing Center

Mind Your

MENTAL HEALTH



Washtenaw
Community College

COUNSELING CENTER
SC 206 | wccnet.edu/counseling

FREE and
confidential
personal
counseling
available to
currently
enrolled
students

**Schedule an
appointment with
a WCC counselor:**

- Call the Counseling Center at 734-677-5223, or:
- Stop by the Counseling Center on the second floor of the Student Center (SC 206)

Speak with a WCC-4-YOU counselor any time:
833-WCC-4-YOU
(833-922-4968).

24/7 RESOURCES

Call Center

833-WCC-4-YOU

(833-922-4968)
toll free and available 24/7

INTERACTIVE SELF-HELP

Download the **WellTrack app** and register with your WCC email address.

CRISIS HOTLINES

- U-M Crisis Hotline..... 734-996-4747
- Suicide Prevention..... 800-273-TALK (8255)
- Safe House (Domestic Violence)..... 734-995-5444
- Community Mental Health..... 734-544-3050
- Veterans Hotline..... 800-273-8255, press 1

CRISIS TEXT LINE

Text **HOME** to **741741**

Serves anyone, in any type of crisis. A live, trained crisis counselor will respond quickly.

In case of a life-threatening emergency, dial 911 or WCC Public Safety at 3411 from a campus phone.

Winter 2022 In-Service

Thursday, January 6, 2022

TIME	TOPIC / PRESENTER(S)
8:30am-10:30am Meeting FT Faculty Required	General Faculty Meeting – Welcome by Executive Vice President Kimberly Hurns https://wccnet-edu.zoom.us/j/83100802283?pwd=QVN0V2t0d2o5RXh2SXJ6ZExaZnlzQT09 Meeting ID: 831 0080 2283 Passcode: 017980 Contact tlc.staff@wccnet.edu if you have any issues logging in.
BREAK — 10:30am-11:00am	
11:00am-12:00pm Teaching	Report on 2020-2021 General Education Assessment Results (Joy Garrett, Dir-Curriculum & Assessment) Join us for a panel discussion of the results of the 2020-2021 General Education Assessment process. In this session, you will hear a brief overview of the process for assessment and discuss the results. What do they mean for our students and programs. How can we work to improve student learning? https://wccnet-edu.zoom.us/j/86715874963?pwd=Ly8rSnRlcHRxTHInMHlLdStoaDBrdz09 Meeting ID: 867 1587 4963 Passcode: 282869 Contact tlc.staff@wccnet.edu if you have any issues logging in.
11:00am-12:00pm Teaching	Responding to [Trauma in] Student Writing (Hava Levitt-Phillips, Maryam Barrie & Tom Zimmerman, Prof Faculty-English/Writing; Kari Mapes & Jim Bauer, LP Counselor/Non-Clin Case Managers) Join Hava, Tom, and Maryam for this panel discussion on best practices for responding to student writing across the curriculum, with particular attention to responding to trauma disclosures in student work. Kari and Jim from Personal Counseling will join us, as well. https://wccnet-edu.zoom.us/j/84538020238?pwd=NjNjMHJrdzk0dXInY256VmdWbFA1UT09 Meeting ID: 845 3802 0238 Passcode: 906944 Contact tlc.staff@wccnet.edu if you have any issues logging in.
11:00am-12:00pm Teaching	Early Alerts & Midterm Grades: Effective Tools for Improving Student Success (Grace Fama, Success Coach Manager) Early Alerts and Midterm grades are powerful tools for improving student success. In this session, Grace will share: <ul style="list-style-type: none">• Research, data, and trends about early alerts• How Success Coaches and Advisors are using early alert and midterm grades to proactively connect with students• Demonstration of how faculty can submit early alerts and midterm grades https://wccnet-edu.zoom.us/j/87940117870?pwd=TnFpcmZ0aVMTnQrQmVWQlIHdHdDQT09 Meeting ID: 879 4011 7870 Passcode: 015333 Contact tlc.staff@wccnet.edu if you have any issues logging in.
BREAK — 12:00pm-1:00pm	
1:00pm-2:00pm Teaching	Alpha Scholars: Reflecting on Fall & Looking Forward to Winter (Jessica Hale, Prof Faculty-Academic Skills) Have you heard about the Alpha Scholars program? Alpha Scholars is an enhanced college that is focused on new (to any college), full-time, degree seeking (associates degree) students. Learn about the launch of this program, successes, future directions and how you, as faculty and staff, can get involved. This Fall, nearly 150 Alpha Scholars dedicated time to defining academic and career goals, enjoying fun and educational experiences, working with peers and leveraging the rich academic and personal support WCC offers. Learn about the launch of this program, early successes, future directions and how you, as faculty and staff, can get involved. https://wccnet-edu.zoom.us/j/86578706001?pwd=QXhmS1YvcERzemY2WStyK2txdmQUT09 Meeting ID: 865 7870 6001 Passcode: 487014 Contact tlc.staff@wccnet.edu if you have any issues logging in.

TIME	TOPIC / PRESENTER(S)
1:00pm-2:00pm Teaching	<p>Why Our Classrooms Need to Include Culturally Relevant Teaching Practices (Kimberly Jones, Prof Faculty-English)</p> <p>What does culture have to do with learning? Why would STEM/Occupational Education courses need to include these methods? What impact will incorporating them have on student access/success? Join Kim, LA-Innovate Committee Member, in understanding the RELEVANCE of culture in teaching and learning.</p> <p>https://wccnet-edu.zoom.us/j/86452167595?pwd=TElhczM1NmswZUIPZEttaGUva1Jmdz09 Meeting ID: 864 5216 7595 Passcode: 063024 Contact tlc.staff@wccnet.edu if you have any issues logging in.</p>
1:00pm-2:00pm Teaching	<p>Queer & Studenting [Student Panel] (Mary Mullalond, Prof Faculty-English/Writing/FPD)</p> <p>How are our queer (LGBTQIA+) students experiencing learning at WCC? What obstacles and challenges do they face in our classrooms? Come hear students from WCC's Outspace+ Club discuss their experiences and learn how to better support our students.</p> <p>https://wccnet-edu.zoom.us/j/84313293444?pwd=YjJSTRZSGhDcWhXcEIRaVhIYWMvZz09 Meeting ID: 843 1329 3444 Passcode: 717248 Contact tlc.staff@wccnet.edu if you have any issues logging in.</p>
2:00pm-3:00pm Teaching	<p>The What, Why, & How of Experiential Learning (Kyrsten Rue, Manager of Experiential Learning)</p> <p>Experiential Learning takes on many forms and has various definitions across the globe. That's also true here at Washtenaw Community College.</p> <p>Our academic programs are enriched through student involvement in work-based learning activities. Through these experiences, students increase their abilities, clarify their career goals, define their values, and bring new perspectives into the classroom.</p> <p>Join Kyrsten to increase your knowledge of the value of experiential education, the options available at WCC, and the process for students who express interest.</p> <p>https://wccnet-edu.zoom.us/j/85630071513 Meeting ID: 856 3007 1513 Contact tlc.staff@wccnet.edu if you have any issues logging in.</p>
2:00pm-3:00pm Workplace Effect.	<p>Budget Process (Sin Mei Dowell, Director-Finance, Purchasing & Accounting)</p> <p>At the end of the session, participants would have a good understanding of the budgeting process, timeline and the budget template to be completed.</p> <p>https://wccnet-edu.zoom.us/j/7561286202?pwd=YXVCMWtKTkgya2pzU0E3M1pWU0F1dz09 Meeting ID: 756 128 6202 Passcode: 246810 Contact tlc.staff@wccnet.edu if you have any issues logging in.</p>
2:00pm-3:00pm Workplace Effect.	<p>Students in Crisis: A Guide for Faculty & Staff (Kari Mapes & Jim Bauer, LP Counselor/Non-Clinical Case Managers)</p> <p>Have you ever been in a position in which you were speaking to a student who presented in crisis or expressed thoughts of suicide? Moments like this can feel terrifying if you are not equipped with tools on how to best respond and know where to turn to connect the student to supportive services. WCC's Licensed Professional Counselors, Kari and Jim will provide information on how to respond to students who present in mental health distress, identify risk factors and protective factors for students and review words to say to offer support to students. In this session, we will also share information on what mental health and wellness services are available to students this semester and how to best connect students to those services.</p> <p>https://wccnet-edu.zoom.us/j/83229630913?pwd=TEISOWEzYStOYWxKWWhiU2sxTzhEZz09 Meeting ID: 832 2963 0913 Passcode: 501270 Contact tlc.staff@wccnet.edu if you have any issues logging in.</p>

BREAK — 3:00pm-3:15pm

TIME	TOPIC / PRESENTER(S)
3:15pm-5:00pm Meeting FT Fac Required	<p>DEPARTMENT MEETINGS – Click on the Department Title to access the Department Zoom Meeting</p> <p>Advance Manufacturing (AL Coleman, Prof Faculty/Dept Chair) In-person meeting in OE 144 (If Covid or scheduling precludes us from having an in-person meeting use this link: https://wccnet-edu.zoom.us/j/87248825794?pwd=N0dMYWlocUMxVmFJYlpuY0hvSDVwQT09)</p> <p>Allied Health (Tina Sprague, Prof Faculty/Dept Chair) Meeting ID: 872 4711 0285 Passcode: 213432</p> <p>Behavioral Sciences (Starr Burke, Prof Faculty/Dept Chair) Meeting ID: 860 7227 4293</p> <p>Business (Doug Waters, Prof Faculty/Dept Chair) Meeting ID: 879 1389 9047 Passcode: 740320</p> <p>Chemistry (Tracy Schwab, Prof Faculty/Dept Chair) Meeting ID: 827 6329 4782 Passcode: 858504</p> <p>Communication, Media & Theatre Arts (Allison Fournier, Prof Faculty/Dept Chair)</p> <ul style="list-style-type: none">• For FULL-Time Faculty Only (3:15pm-5:00pm)• For ALL Full- & Part-Time Faculty (6:00pm-7:30pm) <p>Meeting ID: 822 5572 3660 Passcode: 261654</p> <p>Computer Science & Information Tech (Scott Shaper, Prof Faculty/Dept Chair)</p> <p>Digital Media Arts (Jason Withrow, Prof Faculty/Dept Chair)</p> <p>English & College Readiness (Carrie Krantz, Prof Faculty/Dept Chair) Meeting ID: 824 0035 9704</p> <p>Health Science (Kiela Samuels, Prof Faculty/Dept Chair) Meeting ID: 815 5841 3279 Passcode: 345643</p> <p>Heating, Ventilation & AC (Brian Martindale, Prof Faculty/Dept Chair)</p> <p>Humanities, Language & Arts (Elisabeth Thoburn, Prof Faculty/Dept Chair) Please access through the HLA Blackboard site, named "HLA Department HUB" Meeting ID: 486 890 5796</p> <p>Life Science (Anne Heise, Prof Faculty/Dept Chair) Meeting ID: 868 1069 3355</p> <p>Math (Larry David, Prof Faculty/Dept Chair) Meeting ID: 925 915 1635</p> <p>Nursing (Theresa Bucy, Prof Faculty/Dept Chair) Meeting ID: 264 958 1911</p> <p>Physical Sciences (Susan Albach, Prof Faculty/Dept Chair)</p> <p>Social Sciences (Gregg Heidebrink, Prof Faculty/Dept Chair) Meeting ID: 878 8872 1914 Passcode: 344228</p> <p>Transportation (Rocky Roberts, Prof Faculty/Dept Chair) Meeting ID: 202 036 9609</p> <p>Contact tlc.staff@wccnet.edu if you have any issues logging in.</p>



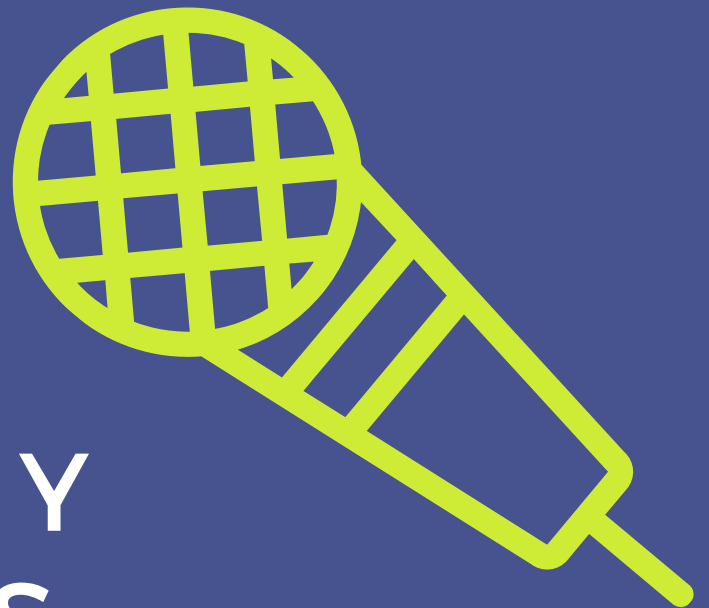
Washtenaw
Community College

RICHARD W. BAILEY LIBRARY

ACTIVE LEARNING ZONE

UNMUTE

HERE



THE BAILEY
LIBRARY IS
THE PLACE FOR
STUDENTS TO
SPEAK UP
IN YOUR VIRTUAL
CLASSES



Washtenaw
Community College

RICHARD W. BAILEY LIBRARY
& LEARNING COMMONS

WINTER SEMESTER HOURS

Mon-Thurs 9:00am - 8:00pm

Friday 9:00am - 5:00pm

Saturday Closed

Sunday 2:00pm - 8:00pm

Bailey Library: wccnet.edu/library

Learning Commons: wccnet.edu/LC

Gunder Myran Building 1st & 2nd Floor

Curriculum & Assessment Drop-In Work Session

WINTER IN-SERVICE 2022



Join members of the Curriculum & Assessment Committee for a drop-in work session. Need help with a curriculum or assessment task? Need a "time/place" to to work with help readily available. Are you ready to take a deeper dive into your assessment data?



JANUARY 07

10 AM-12 PM

JOIN US ON ZOOM!

Meeting ID: 821 0677 3621 Passcode: 359085

Winter 2022 In-Service

Friday, January 7, 2022

TIME	TOPIC / PRESENTER(S)
9:00am-10:00am Teaching	Journaling for Teachers (Maryam Barrie, Prof Faculty-English/Writing) Learn to use writing to develop your teaching practice, as well as practice self-discovery and expression. Session time will be used to write and discuss. Writing prompts will be offered to assist teachers interested in creating a thoughtful place for themselves to consider challenges, mistakes and successes in their teaching practice. https://wccnet-edu.zoom.us/j/4852947223?pwd=NSStQRUo2M2FHk3J0MEhsN1M4UDdadz09 Contact tlc.staff@wccnet.edu if you have any issues logging in.
10:00am-11:00am Leadership	Climate Summit Planning Workshop (Emily Thompson, Prof Faculty-Life Sciences) Concerned about climate change? Come help us plan the Fourth Annual Climate Summit for Winter, 2022! We need YOUR input and ideas to determine this year's focus, the speakers, the date, the venue and the publicity channels! https://wccnet-edu.zoom.us/j/89864115228?pwd=TXVHNEZFQjIwcjdTSIBsVDYxKzdDQT09 Meeting ID: 898 6411 5228 Passcode: 310167 or HZ57 Contact tlc.staff@wccnet.edu if you have any issues logging in.
10:00am-11:30am Workplace Effect.	Mindful Communication (Robin Sober) Mindful communication happens when you are truly in the present and can exercise curiosity, kindness and compassion. You avoid harsh language, gossip, and other things that can put you in a position of confrontation. This session will focus on how you can be more mindful in your communication and connect better. https://us02web.zoom.us/j/82806920278?pwd=bk80Y29XM2JkY2NiQ1JFQ2V5cIhKdz09 Meeting ID: 828 0692 0278 Passcode: 174805 Contact tlc.staff@wccnet.edu if you have any issues logging in.
10:00am-12:00pm Teaching	Curriculum & Assessment Drop-in Work Session (Joy Garrett, Director-Curriculum & Assessment) Join members of the Curriculum and Assessment Committees and Office for a drop-in work session. Need help with a curriculum or assessment task? Need a "time/place" to work with help readily available. Are you ready to take a deeper dive into your assessment data? https://wccnet-edu.zoom.us/j/82106773621?pwd=Q3ZkeVE5dlk1NkhFeW5DYmg1UXo5UT09 Meeting ID: 821 0677 3621 Passcode: 359085 Contact tlc.staff@wccnet.edu if you have any issues logging in.
BREAK — 11:00am-12:00pm or 12pm-1pm	
12:00pm-1:00pm Meeting	WCCEA Lunch Chat (Julie Kissel, Prof Faculty-English/Writing & WCCEA President) https://wccnet-edu.zoom.us/j/85328302241 Meeting ID: 853 2830 2241 Contact tlc.staff@wccnet.edu if you have any issues logging in.
1:00pm-2:30pm Teaching	Part-Time/Adjunct Faculty Institute Winter 2022 Kick-Off (Faculty Professional Development Committee) All part-time and adjunct faculty are invited to the January Part-Time/Adjunct Faculty Institute Kick-Off! You'll need to provide your own food, but we'll provide you with plenty of conversation & resources about inclusive teaching across the curriculum. And don't forget the great Wheel of Names Raffle for Extra Awesome Inservice Mystery Surprises! https://wccnet-edu.zoom.us/j/85721116106?pwd=R0tFaHRQS1hIbGlaN0dyMkpZODFIQT09 Meeting ID: 857 2111 6106 Passcode: 930553 Contact tlc.staff@wccnet.edu if you have any issues logging in.
2:00pm-4:00pm Leadership	STEM Mentor Training (Debbie Taylor, Asst. Director at WISD-UM; Susan Dentel, Prof Faculty-Life Sciences) This 2-hour training session is for STEM mentors. Debbie Taylor will lead this session. Debbie is the assistant director at WISE at UM and has worked extensively with STEM students and mentors. https://wccnet-edu.zoom.us/j/89411642522 Meeting ID: 894 1164 2522 Contact tlc.staff@wccnet.edu if you have any issues logging in.

SAVE THE DATE



Professionals
IN THE CLASSROOM
—Mentor Connect—



NEW COLLABORATION ADDITION
WITH LA INNOVATE

WE'RE LOOKING FOR FACULTY

Sign Up Link Provided at In-Service

APRIL 5TH AND 6TH
9:00A.M - 6:00 P.M COURSES
VIRTUAL AND FACE 2 FACE

Connect your classroom with professionals who can speak to your students directly about the world of work.



Do you know a student who needs help paying for *tuition*, *books*, or *off-campus childcare*?



The *Student Resource Center* is here to help!
src@wccnet.edu

Learning Support Services (LSS)

learningsupport@wccnet.edu
Crane Liberal Arts and Science Building - LA 104
734-973-3342



Accommodations for students with disabilities include:
Advising/setting up accommodations each semester
Testing accommodations
Assistive Technology

(Students who have had an IEP or 504 Plan encouraged to contact LSS)

COLLEGIATE RECOVERY PROGRAM AT WCC

CONNECTING EDUCATION

TO YOUR RECOVERY



ONGOING MEETINGS EVERY WEDNESDAY 12:00PM-1:00PM LA 252



WCC's Collegiate Recovery Program is dedicated to recovery services for your academic success and completion. We are focused on helping students transition into the college community and succeed in the college environment while maintaining sobriety. We provide opportunities for fellowship, encouragement, resources, support groups, programs and events as well as access to college student support services.

What Students are Saying about CRP

"WCC's Collegiate Recovery Program has helped me connect with other students during a time when connection has been challenging to find. I have found support and encouragement not only for my recovery but also for my school experience. I am so grateful that CRP exists at WCC." **Chynna, CRP Co-President**

"CRP has been a nice way for me to make connections with peers and faculty at WCC. And it has been an amazing way to integrate recovery into school, so I don't let my focus of it lax while I work on these new academic challenges." **Jasmine, CRP Officer**

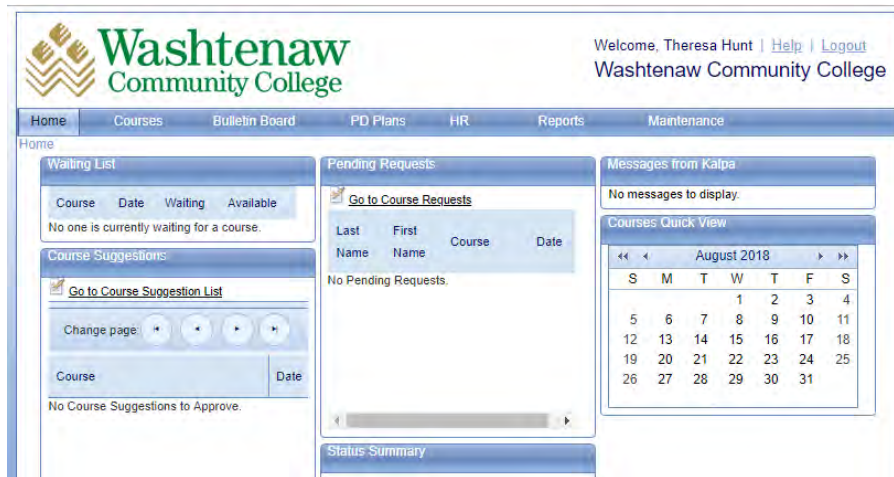
For more information, contact Counseling & Career Planning at 734-677-5102.



If you are a student in recovery, our WCC Collegiate Recovery Program (CRP) is here for you. Join us! Our students meet weekly to share recovery support, academic success resources, service opportunities, social connection, and sober fun!

For meeting links and locations, please contact Teresa Herzog, WCC Collegiate Recovery Program Coordinator at therzog@wccnet.edu or Call/Text: 734-318-0785.

Professional Development Management Tracking System



You will need three pieces of information to login:

- **Website:** <https://www.kalpapdms.com/wcc-login>
- **Login Name:** WCC NetID
- **Password:** WCC Password

With the WCC TLC KALPA software you can:

- **View the In-Service schedule**
- **Register for In-Service sessions**
- **View current and upcoming TLC Offerings**
- **Register in advance for Professional Development sessions**
- **Build your own Professional Development (PD) plan with reminders**
- **Complete the post-workshop survey**
- **View your Professional Development progress**

If any assistance is needed with the login process, please reach out to thunt2@wccnet.edu



Start Building Your Professional Skills Today!

LinkedIn Learning, you get:

- Access to more than 16,000+ expert-led courses
- Receive course recommendations tailored to you
- Earn a certificate when you complete a course
- Use quizzes and project files to practice while you learn
- Convenient learning – access courses 24/7, from your computer or mobile device

To Access LinkedIn Learning:

1. Log into WCC's Blackboard.
2. On the Student Resources page, under "My Courses" click on the "TLC: Teaching & Learning Center (LinkedIn Learning)" course.
3. Under Course Materials, click on the link for your group (Faculty, OPT, Staff).
 - **For Faculty**, your Collection has been divided by requirement (Leadership, Teaching, Workplace Effectiveness). Click on one of these requirements to select your course.
4. Click on any of the LinkedIn Learning course to start learning.

* In order for LinkedIn Learning content to count towards PD hours, courses must be listed in the Collection for **your classification** (**Faculty Collection for Faculty**) or (**OPTs Collection for OPTs**). If you would like to recommend that a course be added to a Collection, please contact tlc.staff@wccnet.edu.

* All College employees may take advantage of LinkedIn Learning content.

Benefits of LinkedIn Learning:

- For Faculty*: Supplement curricula, support the flipped classroom, and use expert content instead of requirement textbooks. For more information on using LinkedIn Learning in your course contact the CiTL at citl@wccnet.edu / facultyhelpdesk@wccnet.edu or call 734-477-8713.
- For Staff*: Serves as a virtual helpdesk for quick answers, explore the most in-demand skills and learn from industry leaders.



Full-Time Faculty Professional Development Requirements

Full-time faculty must complete 16 hours of professional development through the Teaching and Learning Center (TLC) within the Academic Year (July 1st through June 30th).

What Counts

- Any TLC session listed in KALPA with any of the following tags:
 - Teaching
 - Workplace Effectiveness
 - Leadership
- Any offering in the **LinkedIn Learning Faculty Collection** (on the TLC Blackboard site) or **Faculty Professional Development** recorded webinars (find & register on Kalpa for credit). (Please email tlc.staff@wccnet.edu after completing a **recorded session (provide session title and date.)**)
- Any TLC session/course you lead – leading a 1 hour session = 1 hour PD credit:
 - Submit your session ideas & the TLC will coordinate the rest:
<https://wccpriorityone.wufoo.com/forms/tlc-event-form/>
- PD credit will be calculated by scheduled hours per session:
 - 1 hour scheduled session = 1 hour of PD credit

What Doesn't Count

- HR Essential Training (*completed on Blackboard each year; 100% completion of this course required of all WCC Employees*).
- Off-campus professional development (conferences, speakers, etc.).
- Department, Division, Faculty, or other meetings that are already part of your professional responsibility as a faculty member.

How it Works

- Register anytime for sessions or courses listed on KALPA!
- Attend a session. Your attendance will be verified, and your completed PD hours will be updated in KALPA, so you always know how many hours you've completed and how many hours you have left to complete.
- Currently there are over 100 hours of courses available for you to take to earn your 16 hours, and sessions will be continually being added throughout the school year.
- **Tell TLC and FPD what sessions or courses you would like to see added and they will gladly help you add meaningful sessions.**

Please send feedback & questions to tlc.staff@wccnet.edu



Faculty Professional Development *by Faculty, for Faculty*

Part-Time and Adjunct Faculty Professional Development Opportunities

Part-Time and Adjunct Faculty (teaching credit classes) are eligible to receive \$25 stipends for attending professional development sessions offered by the Teaching and Learning Center listed on KALPA.

What Counts

- Any TLC session listed in KALPA with any of the following tags:
 - Teaching
 - Workplace Effectiveness
 - Leadership
- Any offering in the **LinkedIn Learning Faculty Collection** (on the TLC Blackboard site) or **Faculty Professional Development** recorded webinars.

What Doesn't Count

- HR Essential Training (*completed on Blackboard each year; 100% completion of this course required of all WCC Employees*)

Guidelines for Stipends

- Faculty are required to registered in advance for the session
- Faculty must attend the FULL session
- Faculty must be actively teaching credit class(es) to earn stipends
- Stipend payment will be limited to 4 sessions per month
- Stipend payment will be paid monthly

Disclaimers

- Stipend payments will not be issued to those that have a full-time position at WCC.

How it Works

- Register anytime for sessions or courses listed on KALPA!
- Attend a session. Your attendance will be verified, and your completed PD hours will be updated in KALPA, so you always know how many sessions you've completed.
- Please email tlc.staff@wccnet.edu after completing a recorded session (provide session title and date.)

Part-Time & Adjunct Faculty Institute

The Faculty Professional Development Committee offers special sessions just for part-time and adjunct faculty, under the Part-Time & Adjunct Faculty Institute. Register for these sessions in KALPA to receive stipends. Look for Fall and Winter semester Kick-Off sessions before each semester begins and for monthly lunch and learns. The goal of the institute is to foster engagement and community around professional development at WCC.



For more information visit fpd.wccnet.edu or find us on Facebook at [FPDatWCC](https://www.facebook.com/FPDatWCC).

Everyone's reason for coming to WCC is different. And yet, the results are so similar. The reason may be to start a new career path, or strengthen an existing one. To establish a foundation for further academic study at a four-year college. To fulfill a dream, or follow a passion to a very rewarding outcome. Whatever the reason, the result is always a new and interesting chapter in a life story. We all have our something "next," and WCC is a means to achieve it. We teach, we encourage, we guide, we support, we inspire. Life has many chapters. We're here to help you start your next one.



wccnet.edu