

Washtenaw Works!

Keeping up the good work for our students & community

Issue 2 | September 2020

Thank You!

We're one full month into the Fall 2020 semester and I continue to be impressed by all of the great work being accomplished in difficult circumstances.

The spirit of **collaboration** that was emphasized to faculty and staff during In-Service is being witnessed in every division and department of the college.

I hope you enjoy this look back at a sampling of what we accomplished during the month of September.

Dr. Rose B. Bellanca
WCC President



BACK TO SCHOOL

The start of fall classes didn't create the typical buzz on campus, but WCC's commitment to student success and safety was evident.





FUN FACT

The WCC Foundation provided more than \$1 million in student support last year.

Best of Washtenaw

WCC math instructor Alan Orrick was runner-up in the “Best Professor” category in Current Magazine’s 2020 Best of Washtenaw! Not bad in a county that includes the University of Michigan, Eastern Michigan University and Concordia University!

Says Orrick: “I think it’s quite an honor since I teach math. Just proves you can be rigorous without being obtuse, demanding yet fair.

BETTER VIRTUALLY

Addressing students’ mental health is more important than ever, yet more challenging than ever.

That’s why all six WCC Professional Counselors (including Kim Groce, pictured below) completed TeleMental Health Training Certification prior to the fall Semester to better serve students virtually.

“The value of this certification is to make sure our counselors have all the information they need to provide the best possible service to students. videoconferencing allows us that extra connection that we cannot have over the phone.

“ **These are unprecedented times and there are a lot of extra stress factors that students didn’t deal with before.** ”

— Tracci Johnson,
Dean of Students



Best CC in Michigan

WCC was recently ranked No. 1 on Niche.com’s list of the [Best Community Colleges in Michigan](#).

The most notable aspect of this honor is that the ranking methodology incorporates student and alumni surveys..

Visit wccnet.edu/news for full versions of these and other stories.



ON CAMPUS



David Wooten can't take his Introduction to Field Biology students out on WCC's nature trail this semester, so he's bringing the nature trail to them via a virtual classroom.



Above, Jill Jepsen in an art lab. At right, who wore it best? Jeremy Liesen or Scott Hilden?

ON CAMPUS



The ceramics lab is operating with strict safety protocol in place..



Shipping and receiving, mail and grounds work have been ongoing since the pandemic struck in March. Big thanks to all of those dedicated employees who've kept the campus operating.



ON-CAMPUS



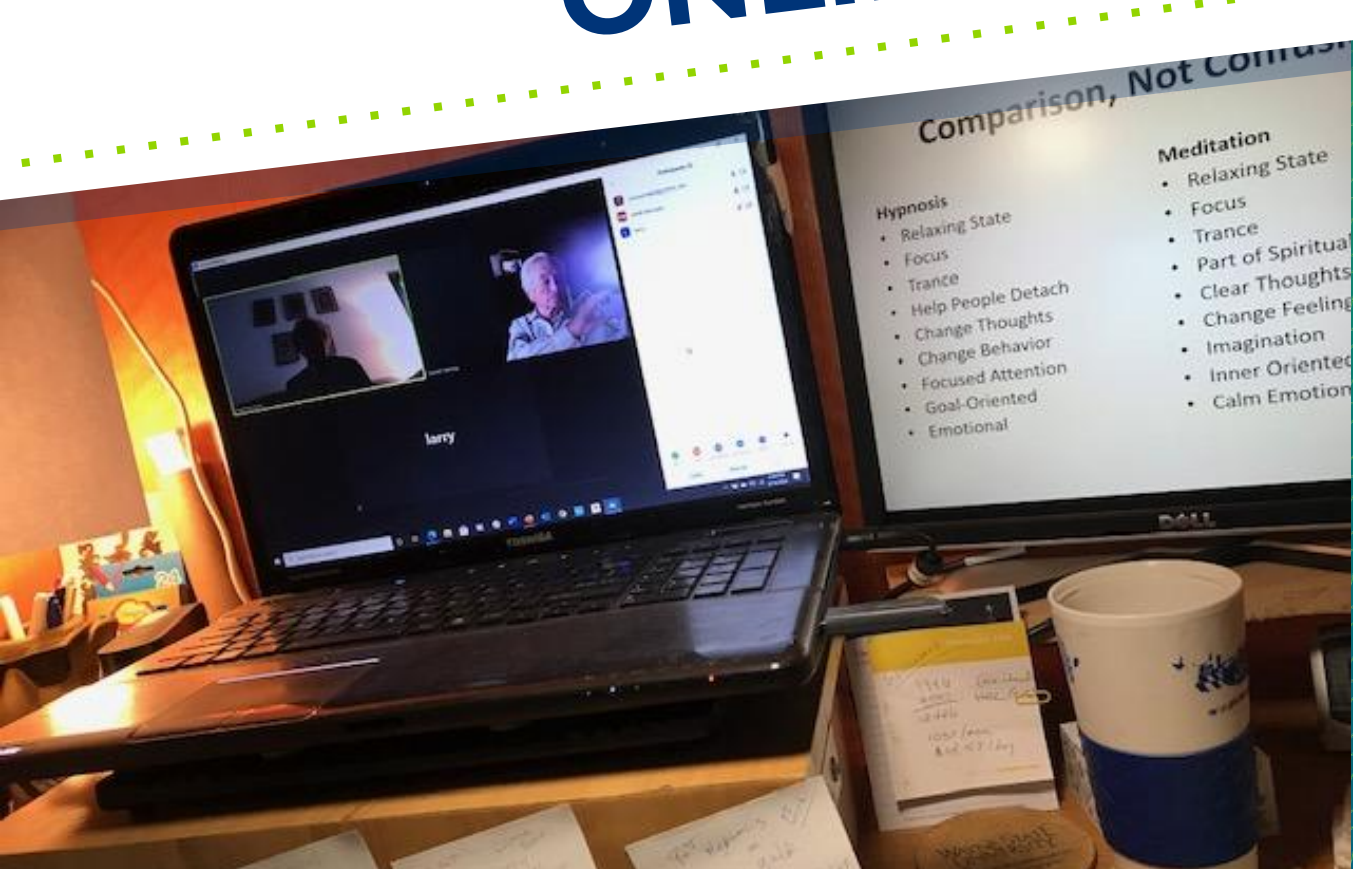
ON-CAMPUS



The Nursing team handing out textbooks with drive-up services (above and below). At right, WCC Conference Services team member Matt Dryja is helping the Police Academy with quartermaster duties and temperature checks.



ONLINE



Behind the scenes with Conrad Welsing's non-credit Hypnosis and Relaxation online class.



Anne Stevenson
working from home

ONLINE



The Greater Washtenaw Small Business Development Center hosted by WCC continues serve clients (and meet via Zoom)..

Academic advisor Whitney Lee's at-home work space.



Director of Web Services
John Powell



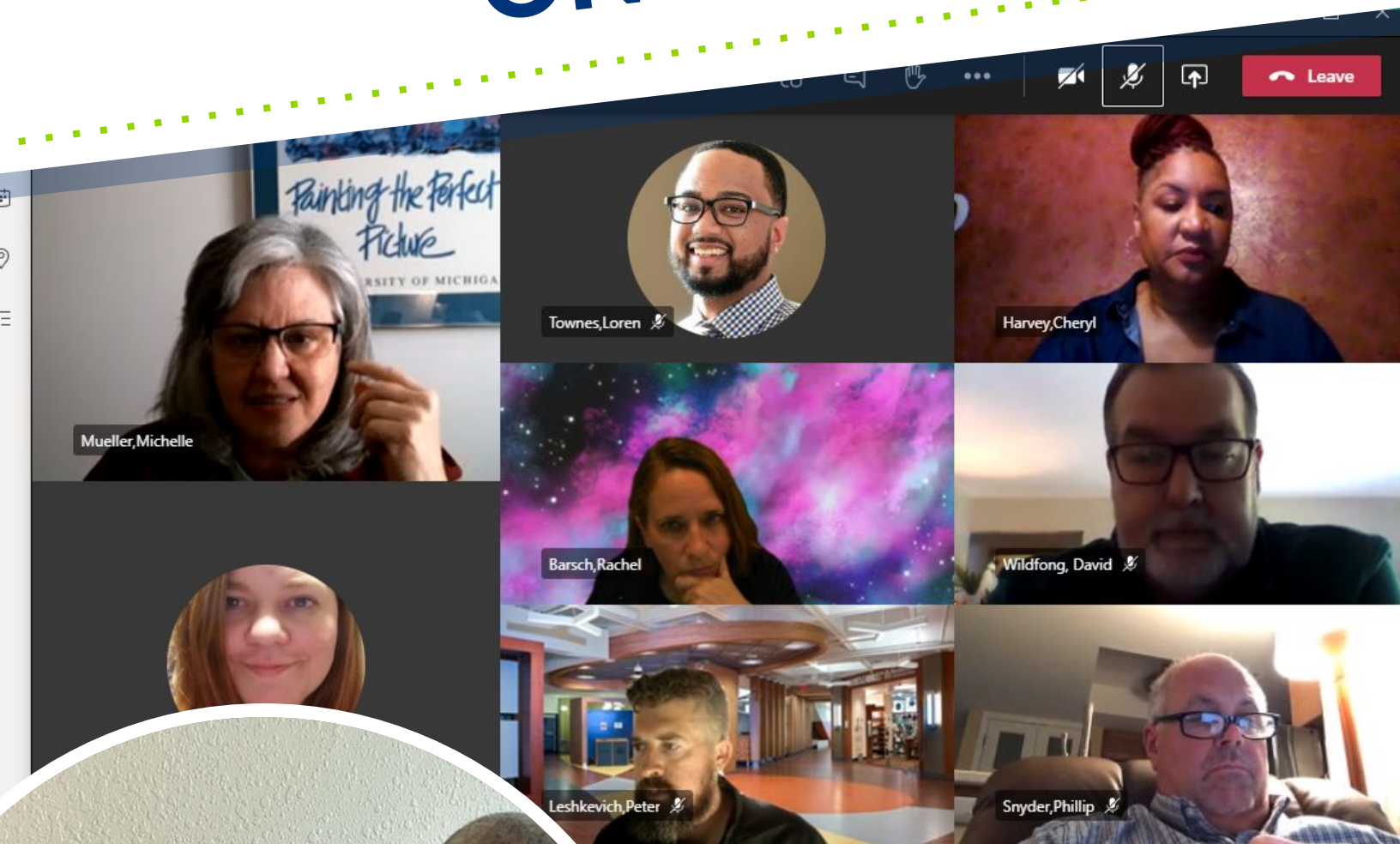
ONLINE

Even walking challenges are being conducted virtually! Congrats to members of the Wolfpack Walkers on their first-place title.

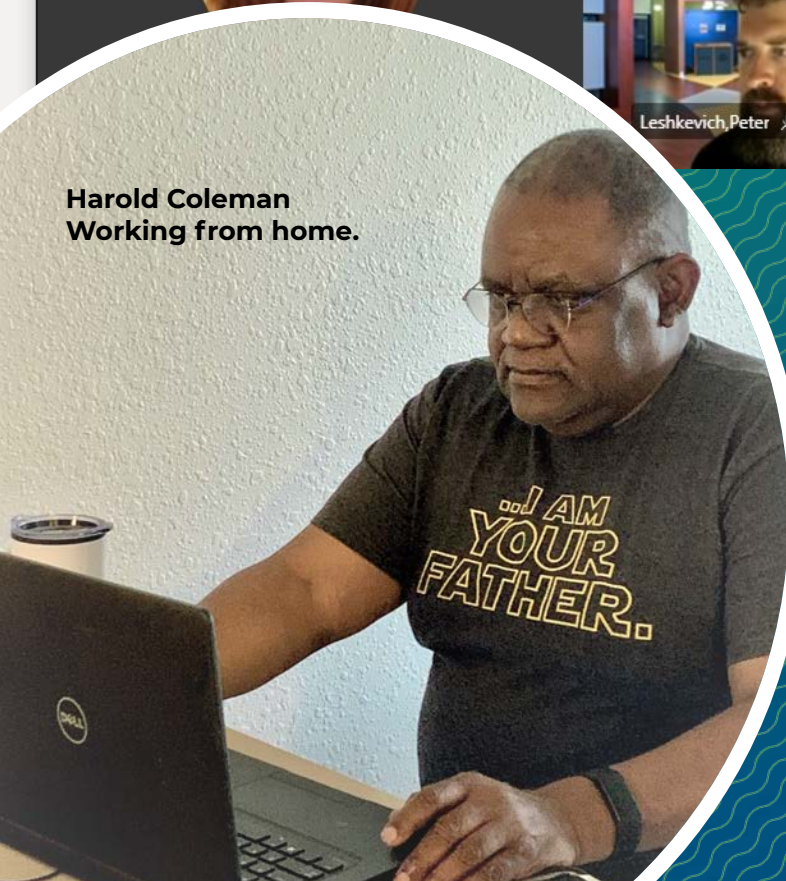


Advisors,
counselors
and success
coaches
meet
bi-monthly.

ONLINE



Harold Coleman
Working from home.



The upcoming Career Catapult was planned over multiple virtual meetings. Learn more about the free, three-day (Oct. 20-22) event for the community at wccnet.edu/career-catapult.



CAREER CATAPULT

WASHTENAW COMMUNITY COLLEGE

Follow WCC on social media:



Washtenaw Community College does not discriminate on the basis of religion, race, color, national origin, age, sex, height, weight, marital status, disability, veteran status, sexual orientation, gender identity, gender expression, or any other protected status in its programs and activities. The following office has been designated to handle inquiries regarding non-discrimination policies: Executive Vice President of Student & Academic Services, SC 247, 734-973-3536.

Facility access inquiries: Associate V.P. of Facilities, Development & Operations, PO 112, 734-677-5322

If you have a disability and require accommodation to participate in this event, contact Learning Support Services at 734-973-3342 to request accommodations at least 72 hours in advance.

© 2020 Washtenaw Community College