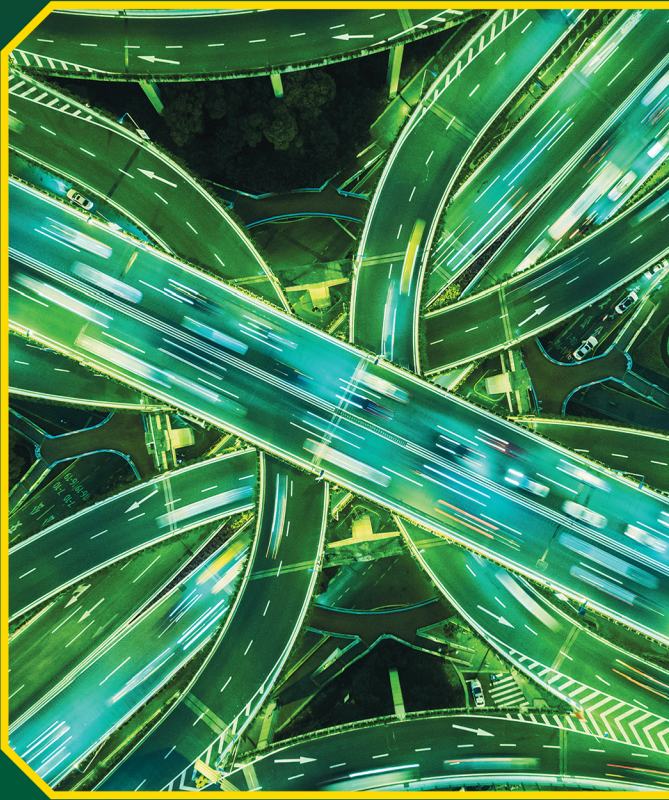


# ADVANCED TRANSPORTATION CENTER



Career and workforce  
preparation for the  
mobility revolution

# Pathways to Mobility Jobs

WCC is at the forefront of the convergence between information technology and the automotive industry. Our training, certificate and degree programs are designed to provide a pathway to numerous jobs in the mobility industry.



# Step into the future with WCC

Washtenaw Community College is leading the way in education and training for careers in connected and autonomous vehicles, intelligent transportation systems and industry 4.0.

Curriculum updates and additions have been made to professional training offerings as well as certificate, associate degree and transfer programs. Examples of certificate and degree programs offered include:



## INTELLIGENT TRANSPORTATION SYSTEMS

- Programming in Java
  - Programming in C++
  - Computer Systems and Networking
  - Cybersecurity
  - Linux/UNIX Systems
  - Mobile Device Programming
  - Web Database Programming
- 



## ADVANCED MANUFACTURING

- Mechatronics
  - Welding and Fabrication Technology
  - Fluid Power
  - Industrial Electronics
  - Machine Tool Programming
  - Manufacturing Processes
- 



## AUTOMOTIVE TRANSPORTATION SERVICING

- Automotive Service Technology
- Automotive Test Technician
- Powertrain Development Technician
- Auto Body Repair
- Motorcycle Service

# Keep your business moving with training from WCC

Meeting current and future business and industry needs and providing solutions for next generation mobility, is a top priority for the WCC Workforce Development team. Emerging transformations in technology are opening doors to new career opportunities. We are positioned to prepare the future and existing workforce with training that supports smart cities and advanced transportation. We have over 60 classes in these areas:

**Big Data Analytics**

**Cloud Computing**

**Connected and Autonomous Vehicles**

**Cybersecurity**

**Fiber Optics**

**Mobile Technologies**

**Networking**

**Operating Systems**

**Programming**

**Virtualization**

The hands-on, teamwork and active learning approach that is inherent at WCC easily aligns with many of the key competencies that are desired by mobility employers, such as:

- Critical & Analytical Thinking
- Problem Solving & Decision Making
- Adaptability & Flexibility
- Accountability
- Customer Focus
- Initiative

# WCC: Shaping the future of Advanced Transportation

WCC has modernized its automotive and manufacturing programs by updating and redesigning its educational and training curriculum and through the purchase of state-of-the-art equipment and tools for diagnosis, analysis and repair of connected and automated vehicles and related infrastructure. Equipment purchases were made possible through a State of Michigan CCSTEP grant.

Below is a list of some of the equipment purchased with the CCSTEP grant on which students are trained:

- 2017 Vehicles: Ford Focus ST, Chevrolet TRAX LT, Toyota Camry HEV
- 3-D Printers: Stratasys Dimension and LulzBot TAZ6
- AKS AccuKut® Plasma Cutting System
- Aluminum Sheet Metal Workstation
- Boss Laser CO2 Laser Cutter
- Engine Dynamometer Systems
- GE 3D CT X-Ray Scanning System
- HAAS CNC Gantry Router
- HAAS VF-2/4 CNC Vertical Machining Centers
- Hypertherm PowerMax 45 Handheld Plasma Cutting Systems
- Lincoln Electric Advanced All-Process Welders
- Lincoln Electric Robotic Welding Education Cells
- Lincoln Electric System5® Robotic Welding Cell
- Miller Dynasty® 350 Multi-Process TIG Welders
- Niton Metal Alloy Analyzer
- Olympus Omniscan® Ultrasonic Defect Detector
- Tarrico Carbon Fiber Forming Autoclave
- Trumpf TruLaser® Welding/Cutting Cell 3000
- Vehicle Chassis Dynamometer System



For more information on the  
Advanced Transportation  
Center at WCC visit:

[wccnet.edu/atc](http://wccnet.edu/atc)

#### Gainful Employment

For more information about our graduation rates, the median debt of students who completed our certificate programs, and other important information, please visit our website at <http://wccnet.edu/ge>

**Washtenaw Community College** does not discriminate on the basis of religion, race, color, national origin, age, sex, height, weight, marital status, disability, veteran status, sexual orientation, gender identity, gender expression, or any other protected status in its programs and activities. The following office has been designated to handle inquiries regarding non-discrimination policies, Title IX or ADA/504 inquires: Vice President of Student & Academic Services, SC 247, 734-973-3536.

#### Facility access inquiries:

V.P. for Facilities and Grounds, PO 112, 734-677-5322

*This publication was designed and produced by WCC Public Relations and Marketing Services.*

Rev: 1/2018



4800 E. Huron River Drive  
Ann Arbor, MI 48105-4800